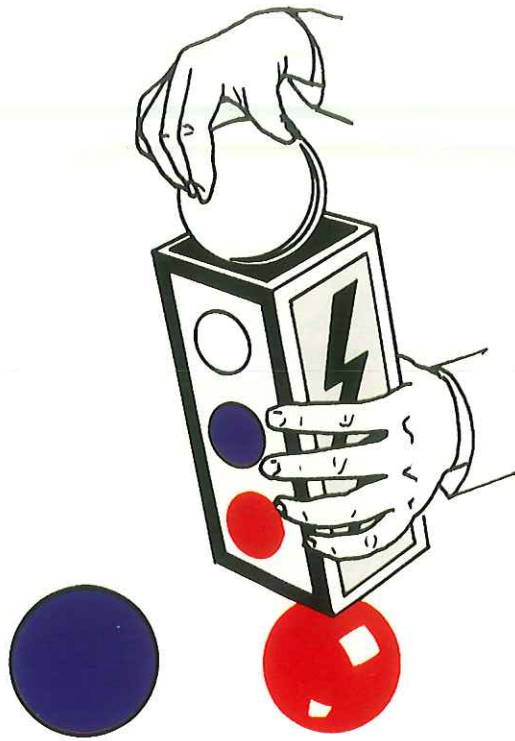


# BALL & BLOCK MAGIC

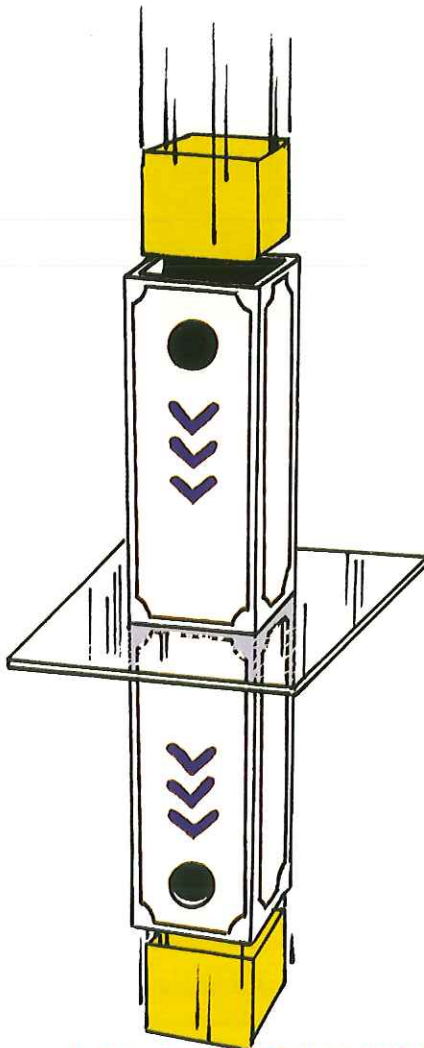


Left to Right:  
(No. 1803) Break Away Die Box, (No. 1822) Phantom Die Cabinet, (No. 1807) Die  
and Silk Casket and (No. 1802) Owen Die Box



**1813  
DYE-A-BALL-IC**

A wooden tube with red, white and blue spots is shown and a white ball dropped thru it. When the white ball is touched to one of the colored spots and then passed thru the tube it emerges with the color of the spot. All sorts of clever routines are possible with this fine piece of equipment designed and made by Owen Magic. Great for kid shows, yet a sharp number for adults.



**1808  
BLOCK GO**

Into the topmost of two stacked wood tubes with a piece of glass between, a wood block is dropped. The block is heard to penetrate the glass and immediately drops out the bottom tube. Both tubes are shown empty. An excellent self-contained effect. Good visibility for stage use.



**1801  
CUPS AND BALLS**

The oldest magical apparatus on record. Balls penetrate, vanish, reappear under the cups and change to other objects. A genuine classic spun in the traditional style and size by Owen Magic.

**1801A  
CROCHET BALLS**

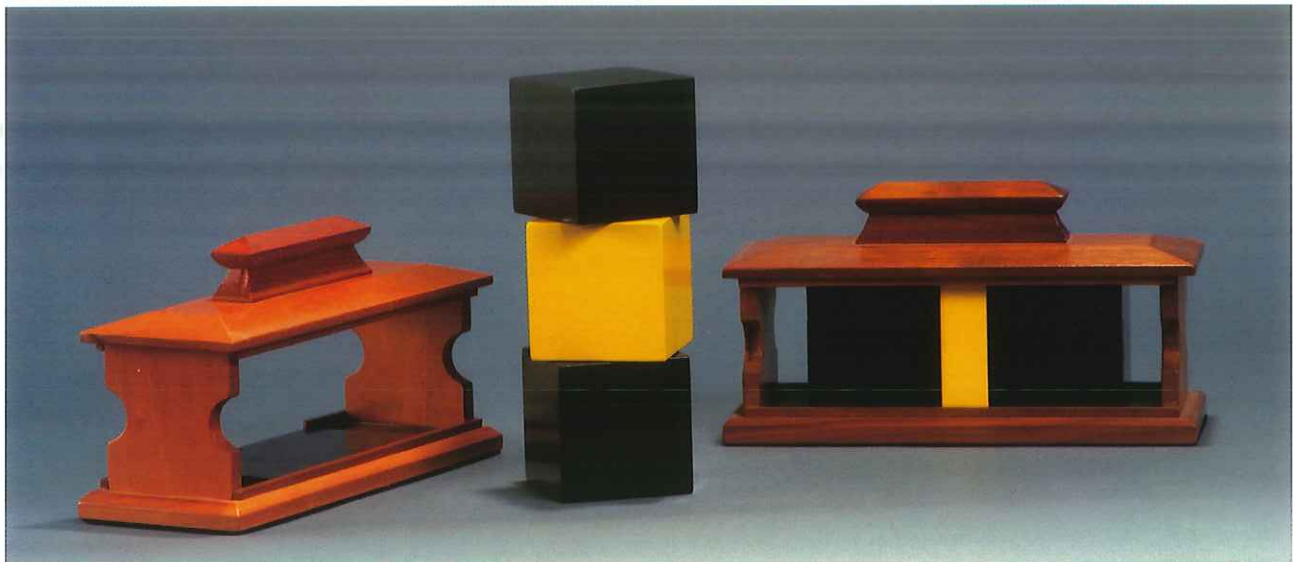
High quality crochet balls sold in sets of four. Magnetic balls available on request. Available only in red.



**1819  
BALLOT BOX MYSTERY**

Three differently colored balls are shown. A spectator is asked to place one of them in a small box held behind his back and to conceal the other two. Both box and balls may be examined at any time, yet the performer is able to call the color of any ball placed in the box.





**1823**  
**SQUEEZAWAY BLOCK**

Three 3-inch blocks, two black and one yellow, are examined, then placed in a case with their front exposed to view. The yellow block is placed between the other two and as the black blocks are pushed towards each other the yellow block is seen to slowly diminish in size until it eventually completely vanishes. The remaining black blocks may again be examined and the yellow block may be reproduced elsewhere. No shells, only three blocks. The case is crafted only in fine cabinet woods.



**1802**  
**OWEN DIE BOX 3"**

The performer places a solid wood die into one of two compartments of a fine wood four door cabinet. Each compartment is of only sufficient size to contain the die. First one set of doors and then the other are opened and closed showing the die to have vanished. Yet the sound of the die can be heard sliding back and forth and the die may be "accidentally" shown in one side. Finally all four doors are opened and the die has really vanished to reappear elsewhere.

**1827**  
**OWEN DIE BOX 4"**



**1801  
CUPS AND BALLS**

The oldest magical apparatus on record. Balls penetrate, vanish, reappear under the cups and change to other objects. A genuine classic spun in the traditional style and size by Owen Magic.

**1801A  
CROCHET BALLS**

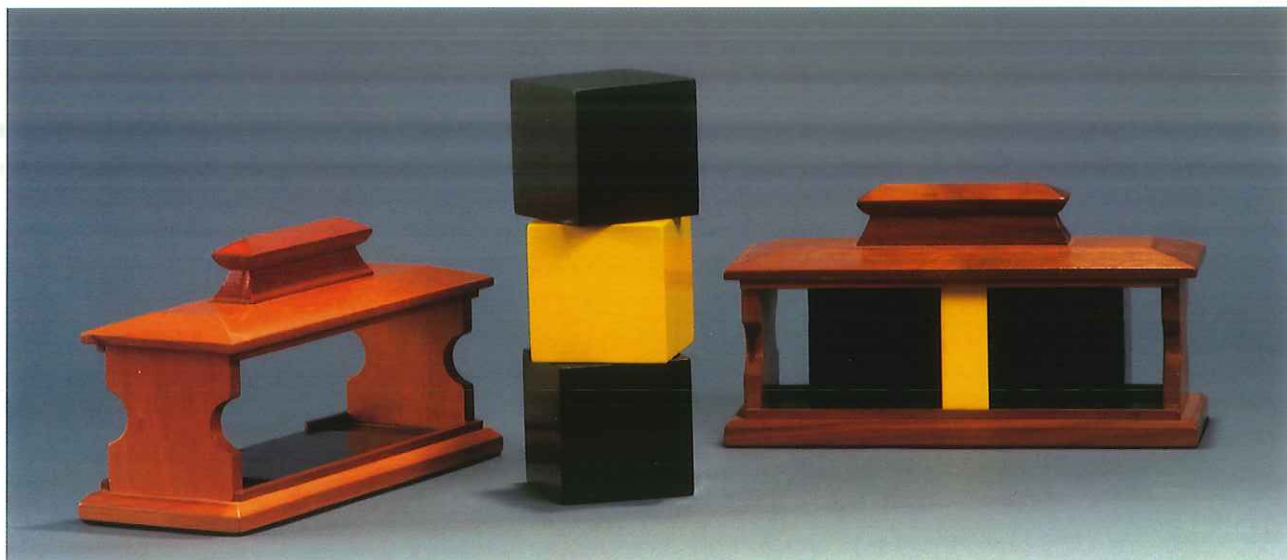
High quality crochet balls sold in sets of four. Magnetic balls available on request. Available only in red.



**1819  
BALLOT BOX MYSTERY**

Three differently colored balls are shown. A spectator is asked to place one of them in a small box held behind his back and to conceal the other two. Both box and balls may be examined at any time, yet the performer is able to call the color of any ball placed in the box.





**1823**

**SQUEEZAWAY BLOCK**

Three 3-inch blocks, two black and one yellow, are examined, then placed in a case with their front exposed to view. The yellow block is placed between the other two and as the black blocks are pushed towards each other the yellow block is seen to slowly diminish in size until it eventually completely vanishes. The remaining black blocks may again be examined and the yellow block may be reproduced elsewhere. No shells, only three blocks. The case is crafted only in fine cabinet woods.



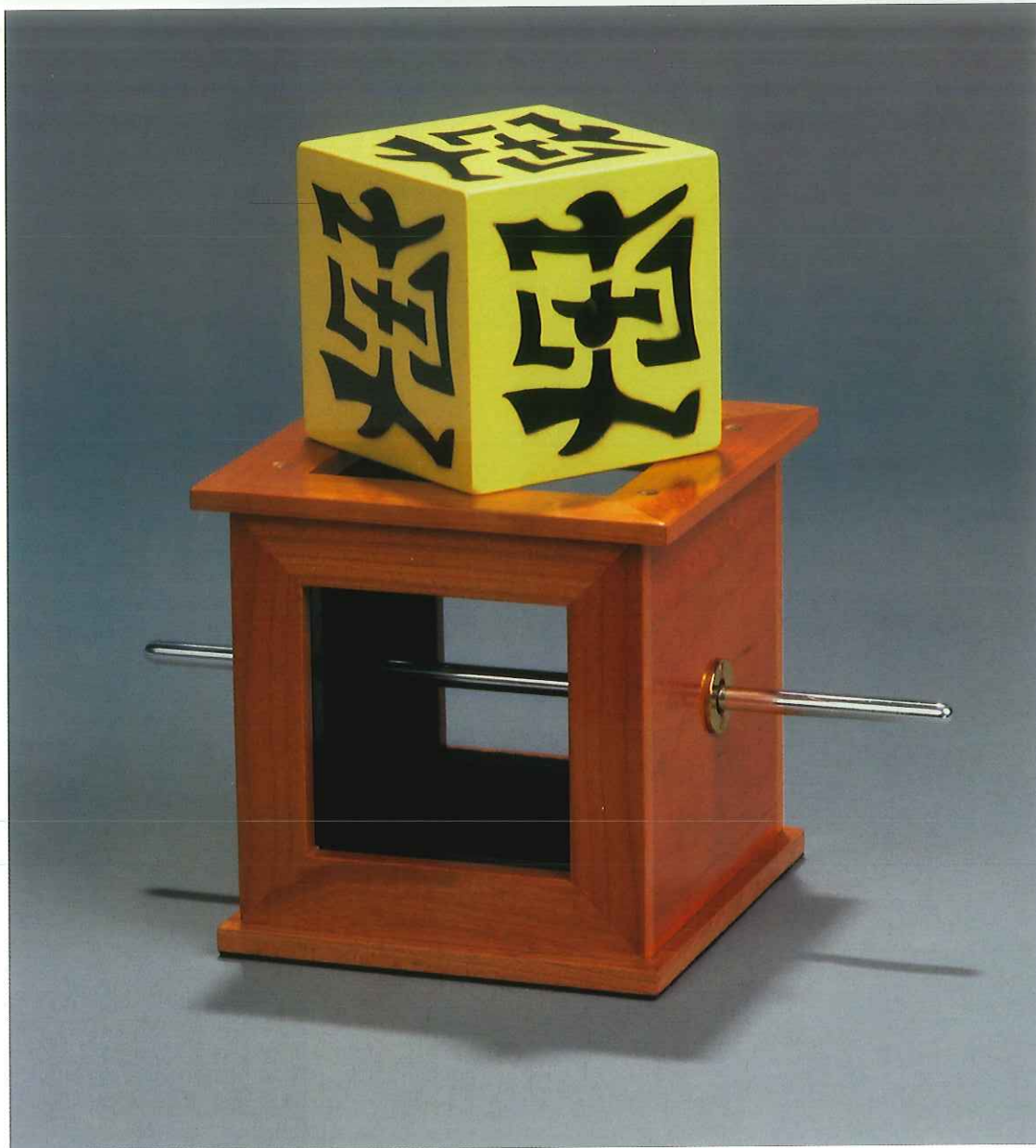
**1802**

**OWEN DIE BOX 3"**

The performer places a solid wood die into one of two compartments of a fine wood four door cabinet. Each compartment is of only sufficient size to contain the die. First one set of doors and then the other are opened and closed showing the die to have vanished. Yet the sound of the die can be heard sliding back and forth and the die may be "accidentally" shown in one side. Finally all four doors are opened and the die has really vanished to reappear elsewhere.

**1827**

**OWEN DIE BOX 4"**



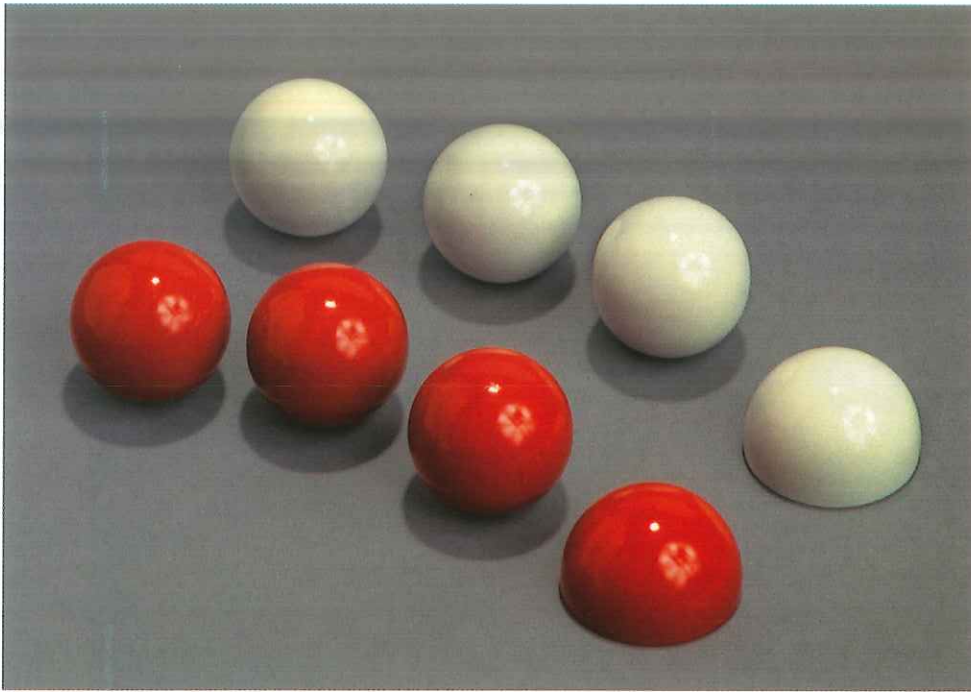
**1822**  
**PHANTOM DIE CABINET**

Into a small cabinet open at top, front and back, the magician places a solid oriental die. A hat is placed on top of the cabinet and die. In a flash the die is seen to fly upwards visibly penetrating the bottom of the hat from whence it is immediately taken and the hat shown unharmed.

**1820**  
**BALL DROPPER**

A silent sure device to hold four billiard balls and deliver them to your hand without fear of premature dropping.





**1815  
OWEN BILLIARD  
BALL SETS**

Owen billiard balls are the finest made. Each ball is perfectly round, hand turned, precision sized and lacquer finished. A regular set consists of three balls and a shell. Stock colors are red and white. Available in 1 3/4 and 2 inch sizes.



**1803  
BREAK AWAY DIE BOX**

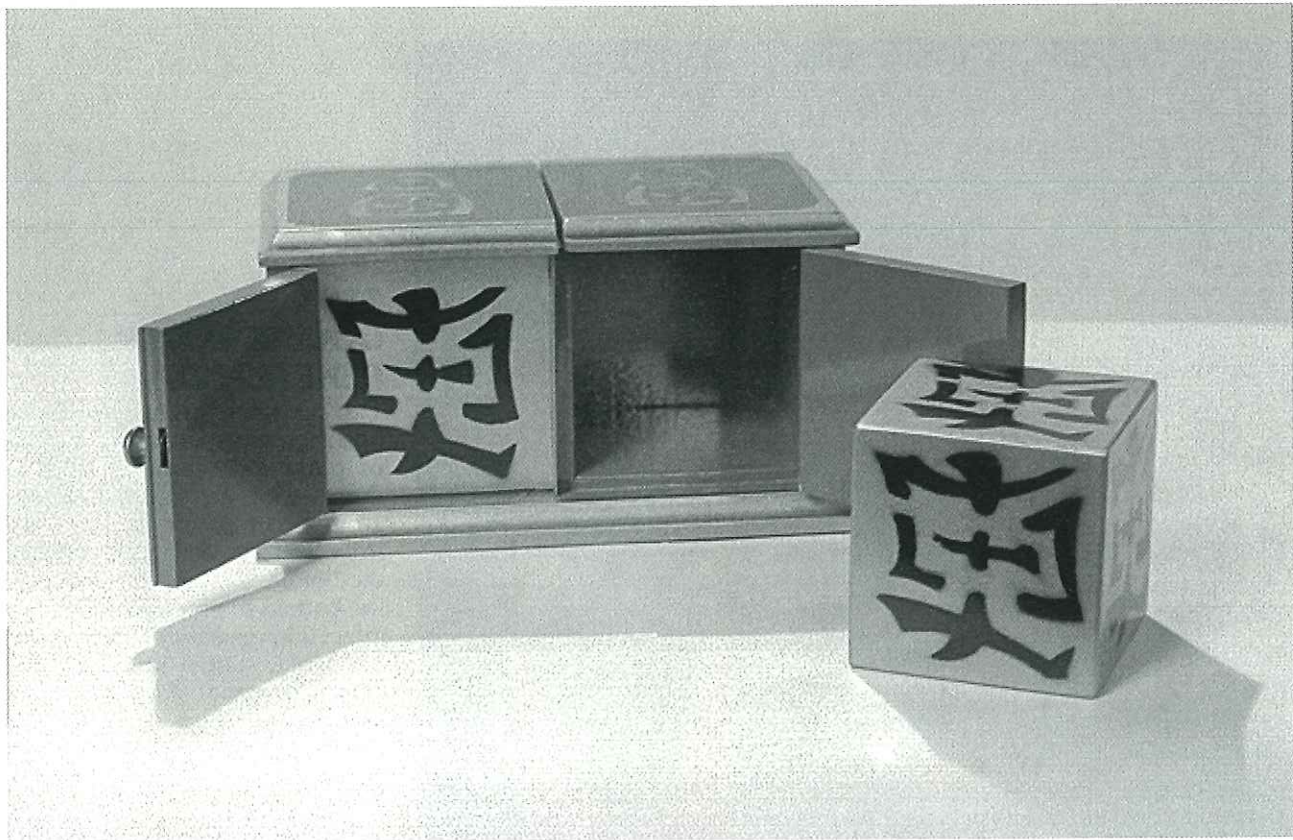
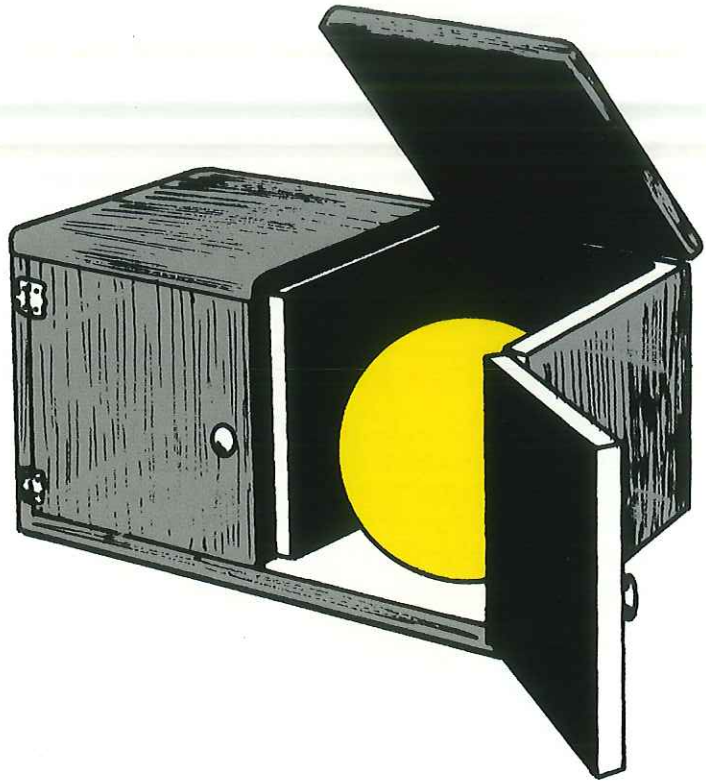
The two halves of this box may be separated and the effect still takes place. The parts are held at a distance from each other with the die being shown first in one box and then the other in addition to all the features of the regular Owen Die Box.



**1810**

**SUCKER BALL BOX**

Use this double box like the die box wherein a ball placed in the box vanishes and yet may be shown in the box at any time. The ball may be heard as it slides from one side to the other as you tip the box, opening first one door and then the other. The Owen ball box is constructed of the finest hardwoods and is finished in natural colors.



**1821**

**ORIENTAL DIE BOX**

The same effect as the Owen die box but both block and box are lavishly decorated with brilliant colors in oriental style.



**1806  
VAMPIRE DIE**

The vampire block is imprisoned in the wood casket by a wood stake thru the sides of the casket and the center of the block. However, the magician slowly lifts it up thru the stake completely out of the casket by a chain attached to the top of the block. The Owen vampire die has features found in no other make.

1806A: 3 inch    1806B: 4 inch

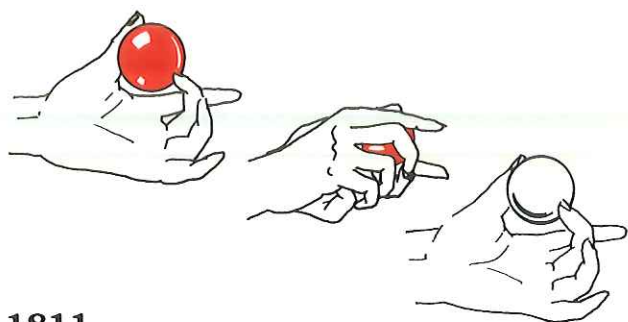


**1804  
DOUBLE BLOCK  
PENETRATION**

Two chimneys, each with four large openings, are stacked with a sheet of glass between. A block is dropped into the top of the stack, is seen to pass the top window, strike the glass, penetrate, and pass the bottom window and drop out the bottom of the lower tube. The effect is immediately repeated and the block shown solid and the chimneys empty. An Owen exclusive masterpiece.

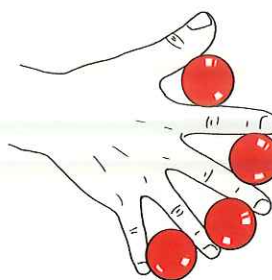
1804A: 3 inch    1804B: 4 inch





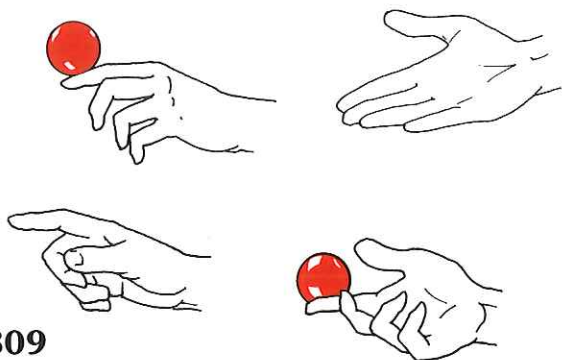
**1811  
COLOR CHANGING BILLIARD BALL**

A solid red ball changes color as the hand is passed over it. Four complete changes may be made with this Owen Billiard Ball.



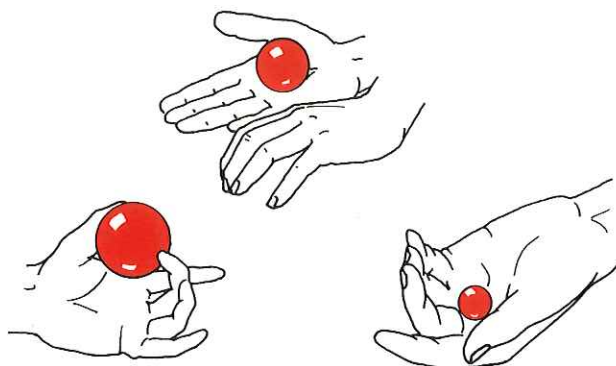
**1818  
BILLIARD BALL CLIMAX**

A flash climax for the ball act. A production of a second handful of balls appears perfectly spaced between the fingers for an excellent finale. Each set is individually adjustable to fit the hand of the performer and is made to match the Owen billiard balls.



**1809  
FLASH-O-BALL**

A billiard ball at your fingertips with a minimum of sleight of hand. A ball vanishes and reappears seemingly from nowhere to make a novice seem an expert. Made to match Owen billiard balls.

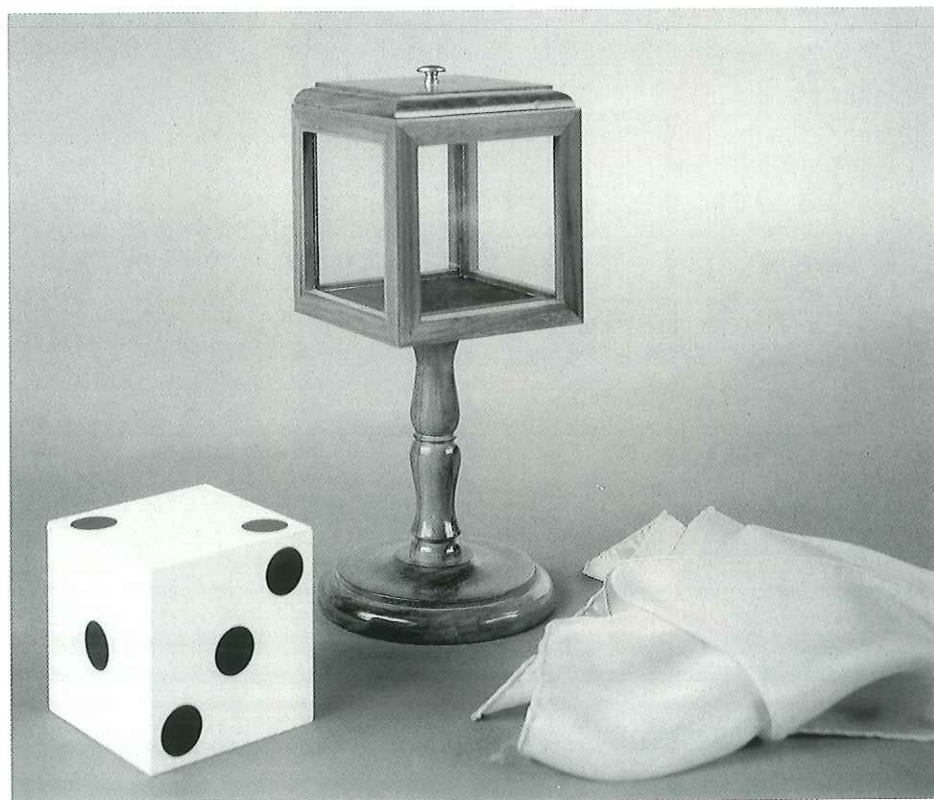


**1814  
DIMINISHING BILLIARD BALL**

A solid wood ball changes to one half, then to one quarter size, and finally vanishes as the performer squeezes it to nothing. Three changes and vanish.

**1807  
DIE AND SILK CASKET**

A die is placed into a clear glass box remaining visible to the audience. A silk handkerchief is placed in a hat. At the performers command they change places. The cabinet and stand are of rare woods and the die is of metal. Owen beautifully made and finished. See the color photo on page 49.





## 1805 ABC BLOCKS

In this new version of the classic ABC Blocks, Bill Taylor has expanded the plot so that the original effect becomes the climax of a surprising routine. Three differently colored giant alphabet blocks, which have a hole bored through their center, are dropped in ABC order onto a polished vertical rod on a small base. The performer covers the blocks with a tube that's just tall enough to conceal the blocks, but leaves the upper few inches of the rod exposed. The performer points out that the blocks are locked in position by the tube on four sides, the base on the bottom, and the rod running through all three. The blocks cannot even turn; there is no way they can possibly change position!

Yet when the tube is lifted, the "B" block has jumped to the top! The tube is shown empty and the performer returns the troublesome "B" block to its correct spot and the blocks are covered again. The audience thinks it's all about the order of the blocks, but when the tube is lifted the "B" block has vanished entirely!

After the tube is shown empty, the "B" block is revealed to have traveled to any location of the performer's choosing.

The effect is extremely practical, performable close-up and surrounded. The blocks are beautifully finished solid hardwood, fully stage-size (much larger than the cheap "joke shop" sets you may have seen). The tube is decorated in the Thayer style, the base is hardwood and polished aluminum.

